

The background features a dark, intricate Gothic architectural design with pointed arches and tracery. Two large, vibrant red roses are positioned at the top corners. The text is centered in a white, gothic-style font.

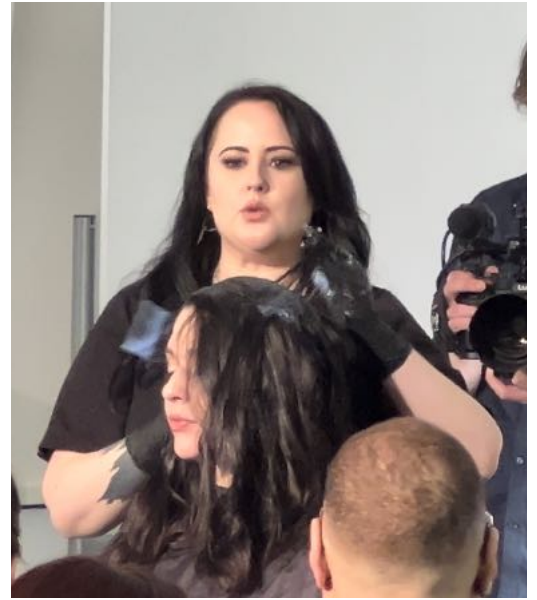
# Gothic Nunn Collection

Created by the Trend Team @ Philip Pelusi

# The Trend Team @ Philip Pelusi

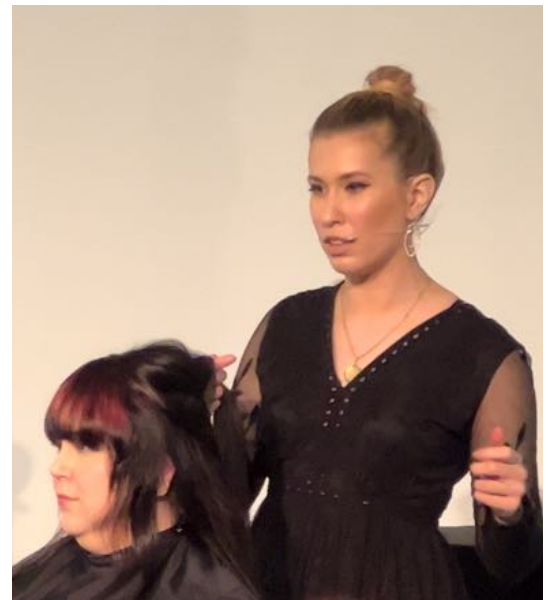
## **Miranda - Robinson**

Elite Colorist, PPCTD Trainer



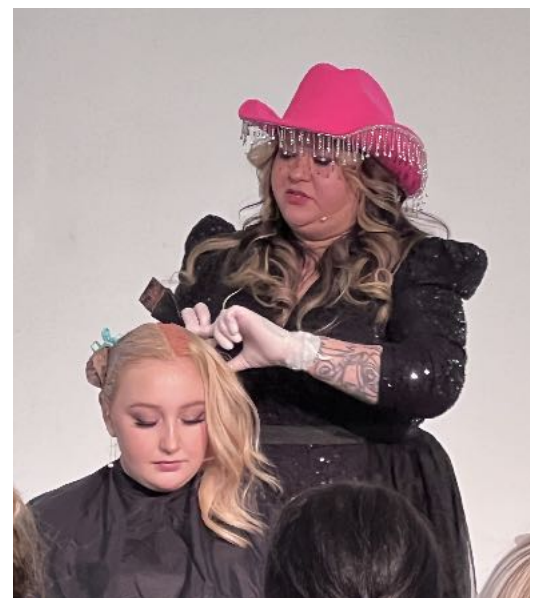
## **Shannon - Siena**

Elite Colorist, PPCTD Trainer,



## **Sami - Cranberry**

Elite Colorist,



# PHILIP PELUSI

## Guest Presenters:



Christy - Robinson  
Artistic Elite Designer  
Director of New Talent



Regina - The Block  
Artistic Elite Designer  
PPCTD Trainer



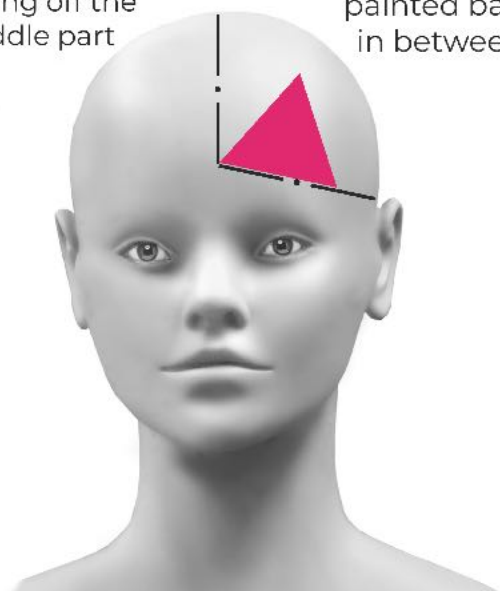
Carlana - The Block  
PPCTD Trainer

# Sami's Split Color:



Triangle Section  
starting off the  
middle part

Sliced Foils with  
painted base  
in between



# Miranda's: Neon Color



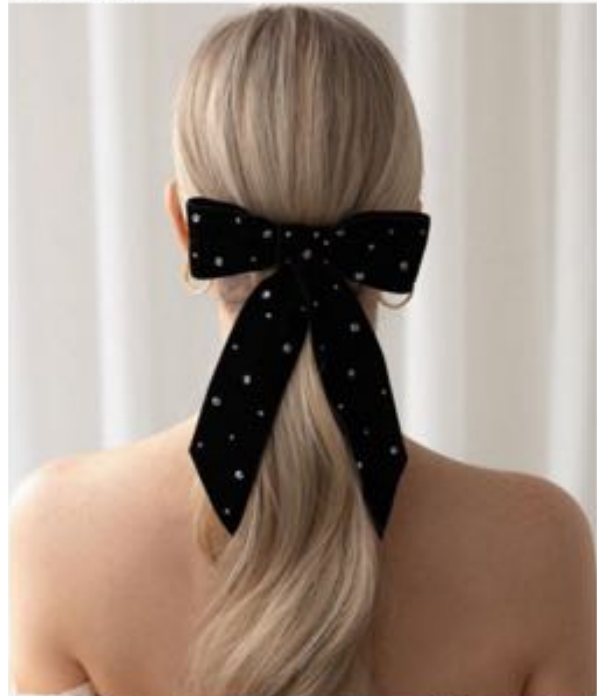
# Shannon's: Part Color Pop



# Shannon's: Razor Cut



# Sami: Updo with Accessories

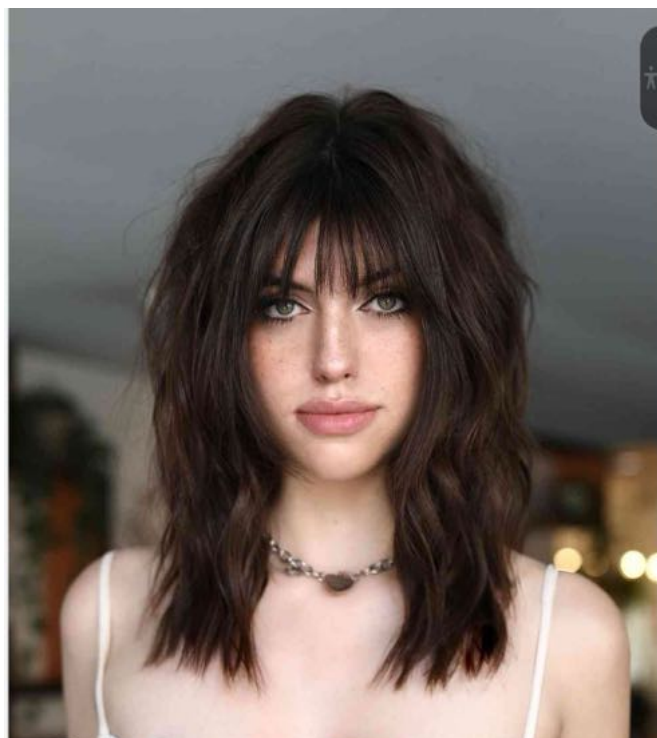




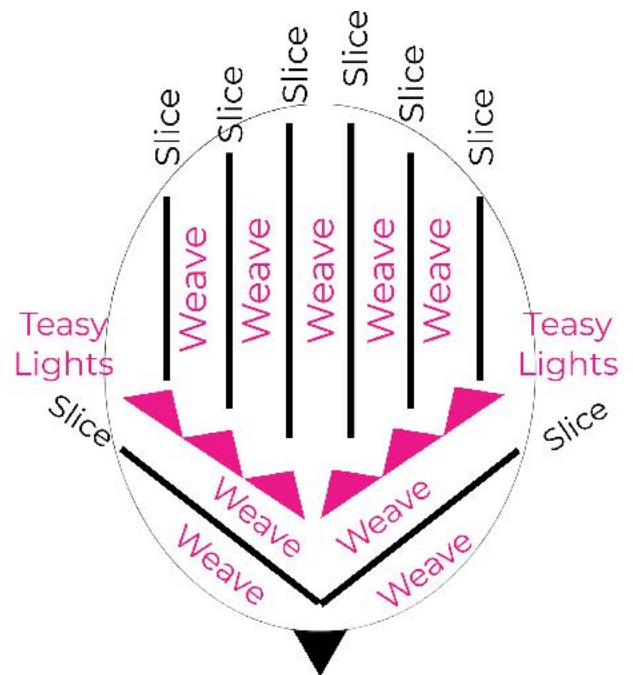
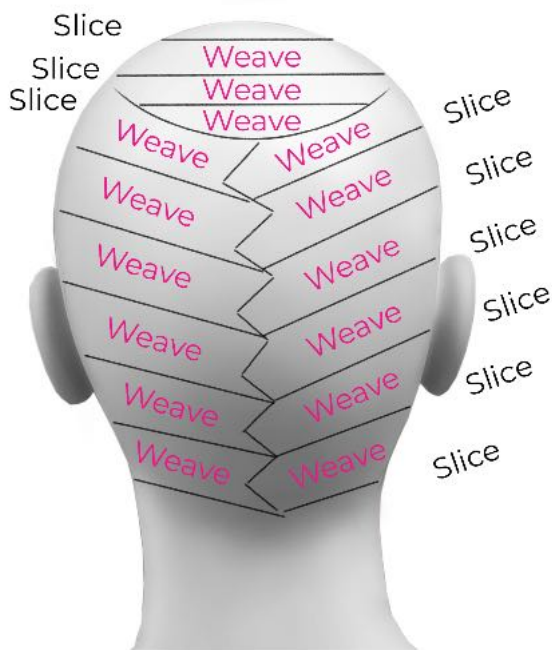
# Sami's: Rounded Bangs



# Regina's Textured Shag w/Bang



# Carlana's Lived In High/Low Light



Hair that is normally left out of the woven highlight is what gets low lighted

Zig Zag part diffuses highlights for a seamless blend

After high/low light, a tap root was done to give it a more blended result

Toner: .7 oz of 9/86 + .7 oz of 10/16 + .6 oz of 9/03

Lowlight: 1 oz of 8/71 + .5 oz of 9/96

Root Tap: 1.5 oz of 7/1 + .5 oz of 8/71

# Christy's Bang Techniques

